



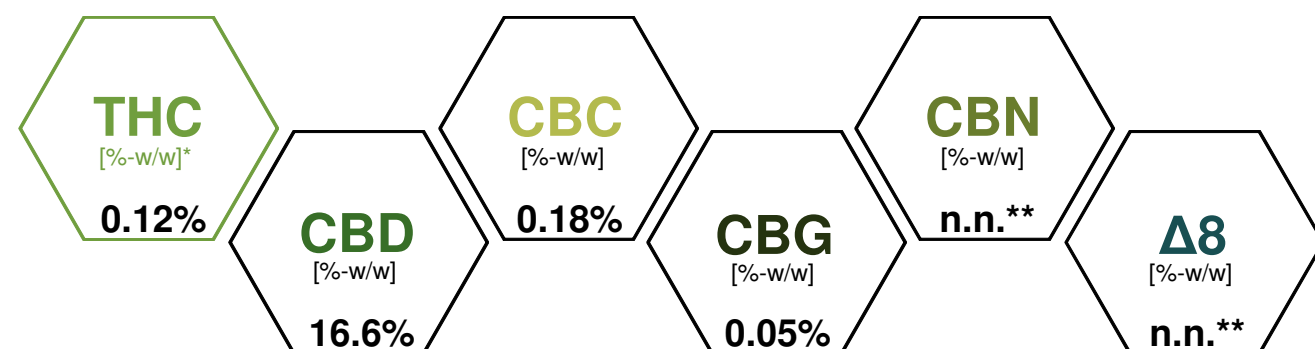
Analysebericht

Kunde **Green Brothers Sàrl**
 Client/ Cliente/ Client **Route de Lavaux 296**
1095 Lutry

DETAILS DER ANALYSE DÉTAILS DE L'ANALYSE/ DETTAGLI DELL' ANALISI/ DETAILS OF THE ANALYSIS			
Datum <i>Date/ Data/ Date</i>	09.07.2019	Probenart <i>Type d'échantillon/ Tipo di campione/ Sample type</i>	Huile
Bestellnummer <i>Commande/ Ordine/ Order number</i>	-	Rechnungsnummer <i>Nr.-Facture/ Nr.- Fattura/ Invoice-Nr.</i>	RE-07/0192831
Externe Bezeichnung <i>Nom externe/ Nome esterno/ External name</i>	15% FS	Interne Bezeichnung <i>Nom interne/ Nome interno/ Internal name</i>	GB.64.003-01

RESULTATE/ RÉSULTATS/ RISULTATI/ RESULTS

Cannabinoidgehalt (GC-FID)



Spezifikation/ Spécification/ Specificazione/ Specification:
 *≤1.0%-w/w **<0.05%-w/w

Im direkten Vergleich mit anderen Analysemethoden oder Laboratorien können die Resultate abweichen. Dieser Analysebericht ist nur für den eingereichten Batch zum Zeitpunkt der Analyse gültig. Die Guttentag Solutions GmbH kann für Entscheidungen, die aufgrund der vorliegenden Daten getroffen wurden, nicht haftbar gemacht werden. Jegliche Modifikation dieses Analyseberichts ist Urkundenfälschung und wird zur Anzeige gebracht.

En comparaison directe avec d'autres méthodes d'analyse ou laboratoires, les résultats peuvent différer. Ce rapport d'analyse n'est valable que pour le lot soumis au moment de l'analyse. Guttentag Solutions GmbH ne peut être tenu responsable des décisions prises sur la base des données présentées. Toute modification de ce rapport d'analyse est falsifiée et sera poursuivi.

Nel confronto diretto con altri metodi di analisi o laboratori, i risultati possono essere diversi. Questo rapporto di analisi è valido solo per il lotto presentato al momento dell'analisi. Guttentag Solutions GmbH non può essere ritenuta responsabile per le decisioni prese sulla base dei dati presentati. Qualsiasi modifica di questo rapporto di analisi è falsificazione di documenti e sarà perseguito.

In direct comparison with other methods of analysis or laboratories, the results may differ. This analysis report is valid only for the submitted batch at the time of analysis. Guttentag Solutions GmbH cannot be held responsible for decisions made on the basis of the presented data. Any modification of this analysis report is forgery and will be prosecuted.



Dr. M. Guttentag
Head of Laboratory

Guttentag Solutions GmbH
 Postfach 503
 8965 Berikon

www.cbd-test.ch

Product Data Sheet

MCT Oil 15% CBD

Best before: 06 / 2022
Batch number: G02-B001F2

1. General information

1.1 Product information:

Appearance : CBD Oil in Glass bottle 10ml with dropper
Ingredients CBD oil : Hemp extract and organic MCT Oil

1.2 Ingredients CBD Oil:

Hemp extract : ± 15% Country of origin : SWITZERLAND
MCT Oil : ± 85% Country of origin : SWITZERLAND

1.3 General specifications hemp extract:

Hemp extract is a critical CO2 hemp product extracted from the leaves and flowers of industrial hemp variety, registered in the Plant variety database of the European Commission.

Botanical/Latin name : Cannabis Sativa L
Plant part used: : Leaves and flowers

1.5 Storage and transport conditions

Food grade packaging : Yes
Temperature (transport) : 15-25°C
Temperature (storage) : 15-25°C
Relative humidity : < 65%
Inner packaging : Food grade glass bottle
Outer packaging : Carton boxes, if applicable

Packaging complies with EU legislation: _____

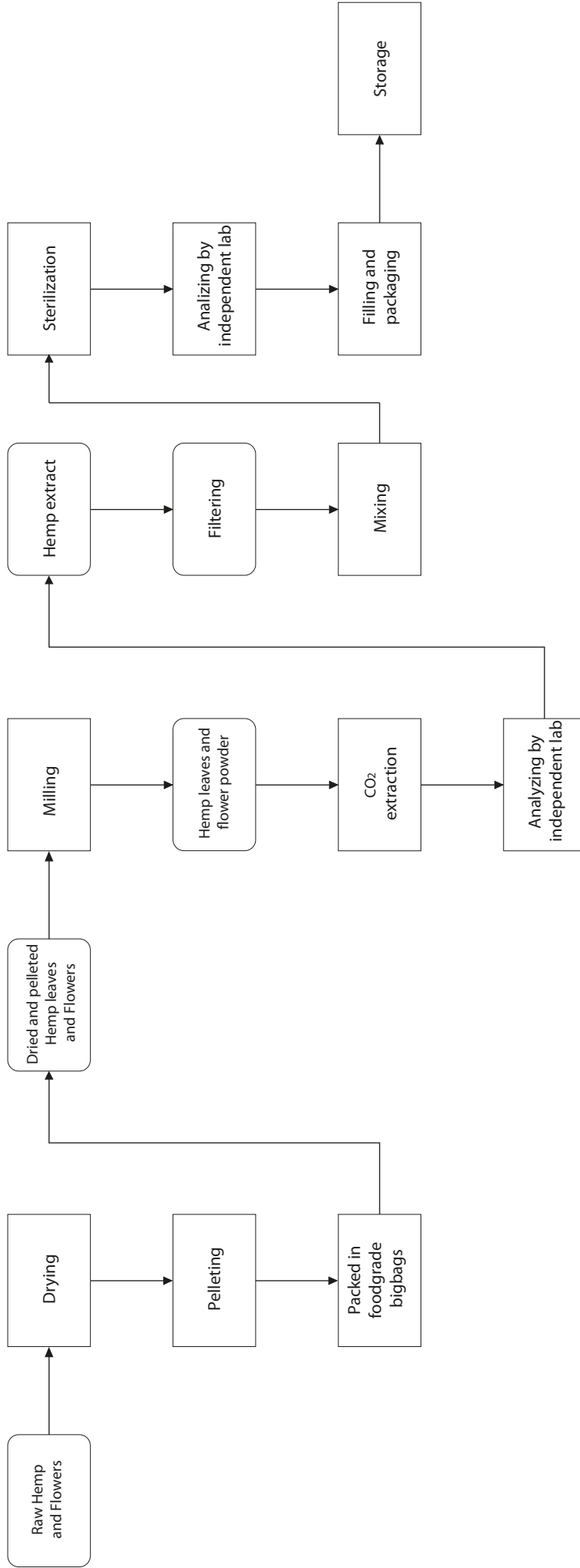
Regulation (EC) No 1935/2004 of the European Parliament and of the council October 27, 2004

Relevant materials and articles intended to come into contact with food

Product Sata Sheet MCT Oil 15% CBD

Best before: 06 / 2022
Batch number: G02-B001F2

1.6 Manufacturing process:
April 6th, 2019



Product Sata Sheet

MCT Oil 15% CBD

Best before: 06 / 2022
Batch number: G02-B001F2

1.8 Quality system information:

Validated quality system : Yes

Production complies with Regulation (EC) No 852/2004 of the European Parliament on the Hygiene of Foodstuffs.

Solvents used : No
Enzymes used : No
Sterilization methods used : Yes
Product irradiated? : No
Methods microbiological growth control : Cold and dry storage
Method of extraction : Supercritical CO₂

2. Cannabinoid Characteristics

Cannabidiol (CBD) : ± 15% (1500mg)

3. Contaminants

Heavy Metals:

Lead : < 3 mg/kg
Cadmium : < 1 mg/kg
Mercury : < 0,1 mg/kg
Arsenic : < 0,3 mg/kg

Dioxins and PCBs

Sum of dioxins (WHOPCDD/F-TEQ) : < 0,75 pg/g
Sum of dioxins and dioxin-like PCBs (WHOPCDD/F-PCB-TEQ) : < 1,25 pg/g
Sum of PCB28, PCB52, PCB101, PCB138, PCB153 and PCB180 (ICES – 6) : < 40 pg/g

Polycyclic aromatic hydrocarbons

Benzo(a)pyrene : < 10 µg/kg
Sum 4 PAHs : < 50 µg/kg

Product is conform with EU legislations and amendments: (EC) No 1881/2006 of 19 December 2006 setting maximum levels for certain contaminants in foodstuffs.

Pesticides

Product is conform with EU legislations and amendments: (EC) NO 396/2005 of 23 February 2005 on maximum residue levels of pesticides in or on food and feed of plant and animal origin and amending Council Directive 91/414/EEC

Date of Issue: April 6th, 2019

Product Data Sheet

MCT Oil 15% CBD

Best before: 06 / 2022
Batch number: G02-B001F2

4. Microbiological Characteristics

Total plate count	: < 1000 cfu/g
Enterobacteriaceae:	: < 100 cfu/g
E coli	: absent/g
Salmonella	: absent/25g
Staphylococcus aureus	: absent/g
Yeast and moulds	: < 100 cfu/g

Mycotoxins

Product is conform with EU legislations and amendments: (EC) No 1881/2006 of 19 December 2006 setting maximum levels for certain contaminants in foodstuff.

5. Declarations of product suitability

5.1 General Declarations:

Suitable for human consumption	: Yes
Suitable for vegetarians	: Yes
Suitable for vegans	: Yes
Suitable for coeliakie patients	: Yes
(gluten intolerance)	
Suitable for diabetics	: Yes

6. GMO Information and traceability

6.1 GMO

The product does not contain or is derived from a GMO. We also confirm that no GMO products have contaminated the final materials.

Legislation European community regulations 1829/2003 and 1830/2003.

6.2 Traceability

The product is fully traceable back to source of origin as mentioned in EU Regulation 178/2002

Product Data Sheet

MCT Oil 15% CBD

Best before: 06 / 2022
Batch number: G02-B001F2

7. Allergenen

According to Commission Directive 2007/68/EC , ALBA List and amendments (2009)

Major allergens	Present as part of product
Cereals containing gluten (wheat, rye, oats, barley, spelt, kamut)	-
Shellfish and derivatives	-
Eggs and egg products	-
Fish and derivatives	-
Peanuts and their derivatives	-
Soya and derivatives	-
Milk and dairy products including lactose.	-
Nuts and derivatives	-
Celery and derivatives	-
Mustard and derivatives	-
Sesame seed and its derivatives	-
Sulphur dioxide and sulphites (E220-E228) >10mg/kg)	-
Lupin derivatives	-
Molluscs and derivatives	-

'-' = absent

Product Sata Sheet MCT Oil 15% CBD

Best before: 06 / 2022
Batch number: G02-B001F2

8. Disclaimer

It is the responsibility of the marketer to check if the product complies with all current legislations in the country of sales.